



Modifying XX-Doubles Finger Directions

1. Remove the XX-Doubles Finger (PT-9025XX) from the Pat-Trap using 7/16" wrench.



Figure 1

2. Using a square as shown in Figure 1 scribe a vertical line as shown in Figure 2. one-inch over from the "step". Draw a line where the dotted line is shown.

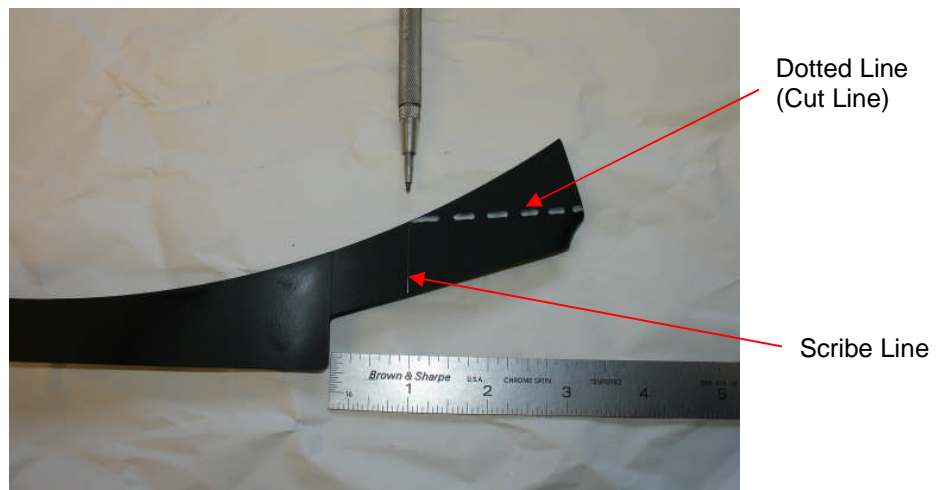


Figure 2



3. Cut along dotted line from the intersection of the vertical scribe line with the curved surface to the right edge of the XX-finger as shown in Figure 2 so that it looks like the bottom finger in Figure 3 below.



Figure 3

4. Sand any burrs and repaint black.
5. Re-install on Pat-Trap
6. Adjust the Modified XX-Finger so that the “step” is positioned approximately $\frac{3}{4}$ ” from the rear edge of the throw plate as shown in Figure 4. below.



Figure 4



PAT-TRAP, Inc.

Choice of the ATA

110 Western Avenue • Henniker, New Hampshire 03242 • Tel. (603) 428-3396 • Fax (603) 428-7340

Identifying Pat-Trap Doubles Fingers

X-Doubles Finger – Circa 1996



XX - Doubles Finger – March 2006

XXX-Doubles Finger – November 2006

Visit Our Web Site – WWW.PATTRAP.COM